

(For Official use only)

ANNUAL ADMINISTRATIVE REPORT

2010-11

(Updated to the period ending 31st March, 2011)



**Government of Manipur
Forest Department**

CONTENTS

<i>CHAPTER</i>	<i>PARTICULARS</i>	<i>PAGE NO.</i>
I	Introduction	2
II	Organizational set-up	4
III	Forest Types & Status of Forests	5
IV	Programmes and Schemes	
	<i>A. Under State Plan Schemes</i>	8
	<i>B. Under Centrally Sponsored Schemes</i>	16
V	Major achievements during the year	
	<i>A. Under State Plan Schemes</i>	18
	<i>B. Under Centrally Sponsored Schemes</i>	20
VI	Constraints in Scientific Management of Forests	23
VII	Revenue & Expenditures	25
VIII	Plan Outlays	26
	Annexures	

CHAPTER - I

INTRODUCTION

Brief History of the past:

No system of forest management and administrative organization in the State existed prior to the British Rule in Manipur (1891). Till the year 1931, the State had neither a separate Forest Department nor Forest Policy and trained personnel to manage its biologically rich forests. During those years (since 1898), the forests of Manipur have been put nominally and in an ill-defined way under the contract of Assam Forest Department for their management and in a similar vague manner within the sphere of influence of DFO, Cachar Forest Division. The forest produces were abundant and its values could not be appreciated for lack of market and communication. Commercial extraction of forest produces started only after 1898 through the DFO: Cachar Division on 75:25 revenue sharing basis between the State of Manipur and Cachar Forest Division under an agreement with Assam Government.

During early period of British rule, no separate forest officer was appointed and forest affairs were looked after by the President, Manipur State Darbar (PMSD) during which collection of royalty from forest produces were introduced through toll stations and a few forests were reserved.

It was only in the year 1931 (1st November) that a separate Forest Department was constituted under the charge of a separate forest member in the Darbar. Considerable improvement had taken place since then through a brief forest policy highlighted under Darbar Resolution No.10A (1932) which envisaged four types of forests in the State, viz;

- | | |
|------------------------|---|
| State Reserve | - To be put under strict State protection. |
| Valley Village Reserve | - For the villages situated in the valley but depending on the nearby forests for meeting their requirements. |
| Hill Village Reserve | - Known as ¼ miles reserve maintained around each recognized hill village (pawa reserve). |
| Open Reserve | - Open for commercial and domestic requirements of people of |

Manipur under permission.

However, due to lack of trained staff and absence of communication coupled with very low socio-economic conditions, management was not given a scientific touch. The first Forest Officer involved in management of forests of the State was Mr. D.C. Kaith, an officer from Himachal Pradesh taken on deputation in the year 1932. He was given first assignment to write about Manipur forests specially of Jiri-Barak drainage forests which at present covers Western Forest Division, Jiribam Forest Division, Southern Forest Division and a portion of Tengnoupal Forest Division. He divided these areas into nineteen timber blocks for proper management and extraction. Mr. Kaith's report was very comprehensive and was taken as the foundation of Forestry in Manipur.

Shri Hari Singh, a product of Edinburgh, succeeded him and stayed in Manipur for over a year. Shri. Reddy replaced him and worked up to 1942. During this period, Shri. L.I.Singh was the Darbar Member in charge of Forests and it was during this period that Indian Forest Act, 1927 was adopted in Manipur with a few modifications. During 1939-41, a Ranger was trained in Forestry Course for the first time. At that time, the entire State was a Forest Division. After Shri. Reddy, a local officer, Shri. R.K. Bijoychandra Singh worked up to 1969 as Chief Forest Officer. On his retirement, Shri. B.S.K.Sharma, IFS took over charge. He was in the helm of affairs for over two decades. During these years, the Department had expanded considerably with every re-organization resulting in creation of Circle Offices and further division of existing Forest Divisions, Range Offices and Beat Offices. Till the present day, the Department had seen as many as five Principal Chief Conservator of Forests retired from Service.

List of Forest Establishments/ territorial Offices up to Beat Office is appended at Annexure-3

CHAPTER – II

ORGANIZATIONAL SET-UP

The Forest Department, Manipur is manned by Officers of the Indian Forest Service, State Forest Service Officers, frontline field executives and ministerial staff. The Principal Chief Conservator of Forests heads the Forest Department, Manipur. The Addl. Principal Chief Conservator of Forests – cum - Chief Wildlife Warden is responsible for Protected Area Network (PAN) which includes management of wildlife, National Parks and Sanctuaries in the State. The Head of Department is assisted by other Addl. Principal Chief Conservator of Forests, having responsibilities viz. Conservation & FDA, FCA & Legal matters, Working Plan, Research & Silviculture, Medicinal Plants & Biodiversity. At the Head Office, the Principal Chief Conservator of Forests is assisted by Chief Conservator of Forests/Planning & Admn., Conservator of Forests/Admn. & Planning, Dy. Conservator of Forests/Admn. & Planning and two Asstt. Conservator of Forests and one WPSO (Wood Preservation & Seasoning Officer).

Besides the above mentioned officers, the field operations are supervised and managed by Chief Conservator of Forests, Conservator of Forests, Dy. Conservator of Forests/Divisional Forest Officers, Asstt. Conservator of Forests, Range Forest Officers, Deputy Rangers, Foresters and Forest Guards posted in various Circle Offices, Division offices, Range offices and Beat offices.

As per the latest Indian Forest Service (Fixation of Cadre strength) reviewed in 2009, Senior Duty Posts of IFS Officers of Manipur part of the Manipur-Tripura Joint Cadre is as below:

<i>Senior Duty Posts under the joint Cadre of Manipur-Tripura (Manipur Part)</i>	<i>No. of Posts</i>
Principal Chief Conservator of Forests	1
Addl. Principal Chief Conservator of Forests	2
Chief Conservator of Forests	6
Conservator of Forests	9
Deputy Conservator of Forests	15
Director, Manipur Zoological Garden	1
Total:	34

Organizational Chart may be seen at Annexure-1

C H A P T E R - I I I

FOREST TYPES & STATUS OF FORESTS

FOREST TYPES

The forests of Manipur have been classified by different authors based on different criteria viz., floristic composition, altitudinal variation etc. Based on Champion & Seth's classification, the following forest types of forests are found in Manipur:

Tropical Semi-evergreen forests:

From the foothills upto an elevation of 900m above MSL, the climax forests is of a semi-evergreen type consisting of Laurus-Melia- Bauhinia association. Other species are Michelia champaca, Schima wallichii, Gmelina arborea, Podocarpus nerifolium, Dillenia spp. etc. These forests are found in the western part of Manipur adjoining Cachar and extends over 644 sqkm. area approx. The classification correspond to Champion & Seth's 'Cachar Tropical Semi-Evergreen i.e. 2B/C2. These forests have been subject to heavy jhumming. One could see a lush brake of muli bamboos in the old abandoned jhumfields.

Moist deciduous forests:

Falling in the same altitudinal zone as above (upto 900m), there is a belt of teak-gurjan forests of Northern Tropical Moist Deciduous forests along the Myanmar (Burma) border. The area under this type of forests is roughly 610 sqkm. The main species of this type of forests are Tectona grandis, Dipterocarpus turbinatus, Melanorrhoea usitata, Dillenia, Xylia, Lagerstroemia, Terminalia, Gmelina, Bombax spp. etc. The practice of jhum cultivation is also not uncommon in these areas too.

East Himalayan Wet temperate forests:

Between the altitude of 1700 to 2700m above MSL, forests of Quercus-Magnolia-Acer and conifers association are met with covering an area of approximately 1450 sqkm. This type of forests falls under Champion & Seth's 'East Himalayan Wet Temperate forests i.e. 11B/C1.

Sub-Alpine Forests:

Above 2700 metre above MSL, sub-alpine vegetation is observed covering a small tract with characteristic species of Prunus, Pyrus, Ligustrum, Taxus, Bucklandia populnea, Acer campbelli, Magnolia campbelli, Castanopsis tribuloides etc. Such areas are of very limited extent.

Grassy blanks:

A certain tract of forests are in a sub-climax state of grassland due to heavy biotic interference measuring up to 154 sqkm. approximately.

Bamboo brakes:

Bamboo brakes and bamboo mixed with scrubs of large extent occur in the western, south-western and north-western parts of the State. Smaller areas of bamboo brakes occur almost all over except at altitudes 1700 m above MSL. Most of the Cachar Tropical semi-evergreen type of forests in the western part of the State has been hacked down for jhum and the trees has given way to a dense growth of Melocana bamboo interspersed with some clump forming bamboos and rare trees here and there. Bamboo also occur as an understory in tree forests. At present, there are about 53 species (Devi & Devi) of bamboo occurring naturally in the State. Two new species identified recently viz., *Bambusa manipureana* and *Dendrocalamus manipureanus*, are also found to be endemic to Manipur.

Cane brakes:

In places where the soil is wet over a long period and is in ill drained clay, rich in humus, various species of canes are found. They form an impenetrable thorny thicket sometimes with a few trees standing over them. The stems are typically trailing and may go as far as 70-75m. A few palms such as Divisteria, Lienla etc. and duloo bamboos are found to occur with the canes. The important species of canes found occurring are calamus tenius, C. leptospadix, C. floribundus and C. erectus.

STATUS OF FORESTS :

According to the State of Forest Report, 2009 by Forest Survey of India, Dehra Dun, the forest cover of Manipur is 17,280 sq. kms. which is 77.40% of the total geographical area of the State. Comparison of the current forest cover with the previous assessment in 2005 shows an overall increase in forest cover of 328 Sq.Km. This overall increase in forest cover is mainly due to regeneration in abandoned jhum areas .

Out of the total forest area in the State, the area under **Reserved Forests** including Wildlife Protected Area Network is 1,467 sq. km. i.e. 8.4 % of the total forest area. An area of 4,171 sq. kms. or 24 % of the total forest area is recorded as **Protected Forests** and the rest 11,780 sq. kms.(67.6%) belong to the category of **Unclassed forests**. During the year 2010-11 there is no reservation and de-reservation of forest areas within RF.

The following table shows the latest district-wise forest cover in Manipur.

Table 1 – District-wise Forest Area:

(as per State of Forest Report 2009, F.S.I., Dehradun)

(Area in sq. kms.)

Sl. No.	District	Geog. Area	Forest Cover				Percentage	Change*
			Very Dense	Moderately Dense	Open Forest	Total Forest		
1	Bishnupur	496	0	0	20	20	4.03	0
2	Chandel	3313	0	734	2065	2799	84.49	0
3	Churachandpur	4570	37	1169	3068	4274	93.52	202
4	Imphal East	669	0	43	173	216	32.29	2
5	Imphal West	559	0	24	30	54	9.66	-2
6	Senapati	3271	233	940	1130	2303	70.41	21
7	Tamenglong	4391	264	1584	2063	3911	89.07	75
8	Thoubal	514	0	4	52	56	10.89	1
9	Ukhrul	4544	167	976	2504	3647	80.26	29
Total		22,327	701	5474	11105	17280	77.40	328

*Change compared to 2005 assessment (revised)

C H A P T E R – I V

PROGRAMMES & SCHEMES

UNDER STATE PLAN SCHEMES:

Forest Department, Manipur has implemented 28 Schemes/programmes under State Plan during the year 2010-11:

IMH 2402 - SOIL AND WATER CONSERVATION

Under Soil and Water conservation in forest areas, 2 (two) schemes were executed :

1. **Afforestation** : In a state like Manipur, where about 90% of the total area is in the hills and where forest is the biggest land use pattern, taking up large scale afforestation needs no emphasis. The scheme of afforestation has been taken up with the objectives of protecting land against erosion, restoration of degraded land to productive areas, better moisture conservation for improving productivity, reduce siltation in reservoirs and finally generation of employment opportunities.

- *To protect the land against soil erosion.*
- *Restoration of degraded/abandoned jhum land and under utilized land to productive management.*
- *To construct soil conservation measures to check erosion and improve soil fertility and moisture content.*
- *Terracing, leveling, contour bunding and construction of small scale engineering structures like vegetative check dams, boulder sausage, bamboo spur, etc.*
- *To check siltation of rivers and increase the life spans of important dams, reservoirs etc.*
- *To improve the socio-economic condition of people.*
- *To generate employment opportunities.*

2. **Rehabilitation of Jhumias** : To wean away the jhumias from the practice of shifting cultivation through an integrated approach involving agriculture, forestry, horticulture , animal husbandry etc.

The objectives of the scheme are:

- *To divert the villagers from jhuming to settled farming.*
- *To provide jhumias alternative means of sustenance.*
- *To conserve the fertility and moisture content of soil.*
- *To generate employment.*
- *To create basic infrastructure facilities and develop villages.*
- *To create awareness among villagers*

II.MH 2406 - FORESTRY & WILDLIFE**3. Direction & Administration:**

The office expenses of different offices of the Department are met from this scheme. In addition to this, there is a provision for development of Information Technology under the scheme.

- *To bear the expenses for court cases/legal consultations.*
- *Preparation of sign boards.*
- *Providing uniforms to the staff.*
- *Payment of muster roll wages.*
- *Computerization and networking of the department for speedy flow of information.*
- *Development of facilities of Remote Sensing and Geographical Information System (GIS) and the interpretation of data for effective monitoring of forests and plantations.*

4. Forest Research.

- *Multi-locational trials of important exotic species.*
- *Development of tissue culture research in forestry species.*
- *Development of agro-forestry models.*
- *Provenance trials, spacing trials, studies on rotation of crops, thinning, monoculture and mixed plantations etc.*
- *Creation of seed orchards and seed production area of important and economic tree species.*
- *Seed collection, storage, certification etc.*
- *Forest protection against insects/disease & their control.*

5. Training of staff: The objective of the scheme is to impart training to forest officers and subordinate staff in forestry and allied subjects for effective management of forest on scientific lines and proper implementation of various schemes.

- *To up-date the technical knowledge and skill of forestry professionals to meet the recent challenges emerging out of developmental process and global environmentalism.*
- *To create training infrastructure.*
- *To develop career of forestry professionals through refresher courses.*
- *To increase efficiency of executive staff.*
- *To impart training to the serving employees in specialized fields in Forestry, Wildlife, Soil Conservation, Social forestry etc.*
- *Training of officers at various places outside the State as nominated by State Government and in-service training to foresters and forest guards at Manipur Forest School for specified training courses in Forestry and allied subjects.*

6. Working Plan: It is imperative to work forest areas and plantations according to the prescription of the Working Plan as regards felling of trees, method of regeneration, maintenance of eco-system etc. so as to bring the forest under systematic scientific management with sustainable commercial utilization. Under the scheme, Working Plans for all Forest Divisions in the State got approved during the year.

- *Survey, demarcation and consolidation of Reserved forests.*
- *Study of land status, bio-diversity status, regeneration status, canopy density, biotic pressure etc.*
- *Enumeration, yield table preparation, volume table preparation, socio-economic studies of forest and fringe villages.*
- *Collection of data through satellite imageries.*
- *Preparation of Working Plans for all the 10 (ten) territorial forest divisions (approval of the competent authority obtained during 2010)*

7. Forestry Statistics

Objectives of the Scheme:

- *Planning, budgeting and financial management of State Schemes and the Centrally Sponsored Schemes.*
- *To provide an orientation to the development schemes.*
- *Preparation of Annual plans, Budget estimates, Revised Estimates of the Department.*
- *Project formulation.*
- *Resource management.*
- *Monitoring and evaluation of implementation of developmental schemes.*
- *Planning of Human Resource Development.*
- *Coordination with the State Planning Board, Planning Commission and the State Government.*
- *Coordination with NGOs in development of forest resources*

8. Forest Communication

Objectives of the Scheme:

- *For better patrolling and control of illegal activities, the importance of keeping vehicles in good running condition cannot be ignored.*
- *Construction of forest roads for better mobility inside the forest area, which will help in effective patrolling and easy transportation of the forest produce.*
- *To maintain fast communication through telephones, internet etc.*

9. Forest Buildings: The scheme is taken up the following objectives:

- *To provide good working and living conditions to the employees both in the Headquarters, Division headquarters and outlying stations.*
- *Construction of quarters and offices and repair of existing offices and revenue stations.*
- *Construction of fencing to offices and quarters.*
- *Repairing of fencing of offices and quarters.*
- *Providing of basic amenities to existing buildings.*

10. Joint Forest Management:

- *To involve people in the management of their own natural resources.*
- *Need based planning.*
- *De-centralization of powers.*
- *To make the system more transparent and more accountable.*
- *To involve women in decision making for natural resource management.*
- *To involve people in development process.*
- *To make people responsible to earn their livelihood by usufruct sharing.*
- *To make people aware of importance of forests and environmental conservation.*

11. Forest Protection & Fire Control:

- *Patrolling of forest areas.*
- *Cutting of forest fire lines and digging of cattle-proof trenches.*
- *Opening of check posts at vulnerable points.*
- *Development of information network and social fencing.*
- *Construction of watch towers at strategic points.*
- *Purchase of fire extinguishers, fire alarms and fire suppressing instruments.*
- *Observation of “Forest Protection Day” every year in each district.*
- *Developing an immediate rewarding system for public informers who help in prevention of forest offence leading to confiscation of articles and conviction of the culprits.*

12. Forest Publicity:

- *To educate the people regarding the tangible and intangible benefits of forests.*
- *To make people aware of importance of eco-system and clean environment.*
- *To develop an attitude among the young generation towards the environmental conservation.*
- *Celebration of Van Mahotsava, World Forestry Day, Wild Life Week etc.*

13. Social Forestry :

The scheme of Social Forestry has been drawn up with the objective of meeting the fuel wood, fodder and small timber requirements of the local people from the nearby areas and thus leave the forests in the interior hill areas for maintaining the ecological balance. For implementation of the scheme, suitable barren and degraded forest area and wastelands near district headquarters and major villages in the hill areas are given due consideration. The scheme was taken up for the fuelwood and fodder plantation and execution of small scale engineering structures in selected areas.

Objectives of the Scheme:

- *To ensure adequate supply of fuel wood for cooking and heating purposes.*
- *To facilitate the supply of bamboo and small timber for agricultural and commercial purposes.*

- *To supply fodder for cattle.*
- *To generate employment of villagers.*
- *To reclaim degraded forests and wastelands.*
- *To conserve soil and water particularly in hill areas.*
- *To reduce the damage caused by Shifting Cultivation.*
- *Free distribution of seedlings to public and institutions.*
- *To generate a massive people's movement for environmental conservation.*

14. Urban & Recreational Forestry :

Objectives of the Scheme:

- *Intensive drive for increasing tree cover in districts/townships to counter pressure arising out of urbanization and also greening of hills around urban areas.*
- *Beautification of districts/townships within ornamental road-side plantations with species like Gulmohor, Amaltas, Cham, Silver Oak etc. Plantation and landscaping of public amusement places.*
- *To improve facilities in National Parks, Sanctuaries, Orchid Parks, Arboretum etc. to give a boost to eco-tourism.*
- *Extension of the existing Orchid Parks to develop two separate zones viz. conservation zone and exhibition zone.*
- *Landscaping.*

15. Re-stocking of Reserved Forests (Economic Plantation):

Objectives of the Scheme:

- *To re-stock and maintain the reserved forests which are under tremendous pressure due to biotic interference.*
- *Re-stocking by planting industrial and economic as well as local species like Gmelina arborea, Pinus kesiya, Schima wallichii, Dalbergia sissoo, Tectona grandis, Quercus spp., Castanopsis spp., Terminalia myriocarpa, Cedrela toona, Juglans regia etc.*
- *To manage the Reserved forests by prescribed silvicultural operations.*
- *To bring the Reserved forests at that level so that we are able to get the sustained yield.*

16. Development of Minor Forest Produce (MFPs):

Objectives of the Scheme:

- *Preserving and augmenting the production of indigenous minor forest produce like agar, bamboo, cane, cardamom, medicinal plants etc. by growing them in suitable areas.*
- *Establishment of a laboratory for propagation of common orchids for commercial purpose.*
- *Development of quality of bamboo & canes to meet the requirements of handicraft industries.*
- *Value addition of MFPs.*
- *Marketing of MFPs.*

17. Development and Extension of Orchids (New Scheme):**Objectives of the Scheme:**

- Development and extension of orchids under PPP mode.
- Development of research facilities.
- Engagement of Research Personnel on contract.
- Establishment of more orchid Parks in suitable areas.
- Development of Orchid Tourism.
- Commercialization of Orchids.
- Development of market for export of orchids.
- Documentation of orchids.

18. Implementation of Working Plans and Departmental Extraction (New Scheme):

Objectives of the Scheme: Working Plans are required for scientific management of forests on sustainable basis. As per orders of the Hon'ble Supreme Court (in the years 1996 and 1998), no forestry operations may be taken up in forests without a Working Plan, duly approved by Ministry of Environment and Forests (MoEF), Government of India. In compliance, Forest Department of Manipur formulated Working Plans for Ukhrul and Chandel Forest Divisions for the period of 10 years (2004-05 to 2013-14), which have already been approved by MoEF. These Working Plans are required to be implemented in letter and spirit. Till 2009-10, due to non-availability of adequate funds, these Working Plans could not be implemented as required, which may result in unsustainable use of forest resources as well as loss of revenue. Therefore this new scheme has been proposed.

19. State share of CSS/NEC.

To make available the state's component of required fund on schemes like 'Intensification of Forest Management schemes', under Central: state sharing basis, this scheme is taken up :

- Forest Fire Control & Management.
- Working Plan/Survey & Demarcation
- Strengthening of Infrastructure for Forest Protection.

20. 13th Finance Commission Grant**Objectives of the Scheme:**

Subsequent to the directions of the Hon'ble Supreme Court on exploitation of forest wealth, the 11th Finance Commission had advised States to formulate Working Plans for scientific management of forests for the country as a whole. During, 2010-11, Working Plans for all Forest Divisions in the State have been approved by Government of India. Implementation of approved Action Plan as envisaged in the Working Plans, in the scientific management of Forests, is being taken up under 13th Finance Commission Award with total

allocation of Rs.150.32 Crore for next 5 years i.e. 2010-2015 The approved outlay for 2010-11 is Rs. 18.79 Crore

21 Compensatory Afforestation (CA) and Environmental Restoration (New Scheme):

For construction of infrastructure and development projects, forest land is being invariably diverted for non-forestry purposes, which leads to depletion of forest resources as well as environmental degradation. Compensatory afforestation is one of the measures to mitigate the forest cover loss. The amount of CA is charged from the project authority. Moreover, as per the directions of the Hon'ble Supreme Court, Net Present Value (NPV) of the forest land shall also be charged in such cases. The amount charged towards NPV etc. shall be utilized for environmental restoration, wild life conservation etc. in the affected areas and also nearby areas through CAMPA.

22. Captive Breeding and Rehabilitation of Endangered Species:

Manipur is home of many rare, threatened and endangered wildlife species like Sangai deer, Blyth's Tragopan, Hume's bar-tailed pheasant, Burmese red jungle fowl, Kaliji pheasant, Japanese/Burmese pea fowl etc. Therefore, captive breeding and rehabilitation works are required to be undertaken to increase their number. This will have three categories of efforts: (a) In-situ Captive Breeding of endangered species and threatened species in their natural habitat; (b) Improvement of degraded natural habitat of the captive bred wild life population by closure of grazing, prevention of outbreak of fire, complete moratorium on free entry of the local people into the selected habitat and habitat manipulation by conservation and introduction of local species of plants; and (c) release of captive bred population in various stages in a regulated manner in their natural habitat after it has been improved to the required level.

23. Control of Poaching and Illegal Trade in Wildlife:

A large number of valuable wildlife, some rare and endangered species such as slow loris, golden cat, gharial, wild elephant, Himalayan black bear, spotted linsang, hornbills (many species), Blyth's tragopan, Hume's bar-tailed pheasant, etc. are found outside conservation areas of the State. Quite often these animals are hunted mercilessly for illegal trade of their products. To control nefarious activities of the poachers, it is imperative to impose a complete moratorium on free poaching and illegal trade in wild life and wild life articles. It is also proposed to award incentive to wild life staff/public for detection of wild life offences leading to successful legal action in the court of law. It is with this objective that the scheme has been drawn up.

24. Development of Keibul Lamjao National Park (KLNP):

Objectives of the Scheme:

- To protect the brow-antlered deer (Sangai), one of the endangered deer species in the world, now available only in Keibul Lamjao National Park of Manipur, which is its only natural habitat.
- To re-stock the degraded natural habitat of brow-antlered deer (Sangai) with original food and shelter plants.
- To stop human interference and fishing in the National Park area by awareness campaign.

- To develop the National park area of Loktak Lake as “Birds Sanctuary” as well, considering the arrival of migratory birds every year.
- To eliminate unwanted plant species such as water hyacinth from the lake to create space for indigenous species to encourage the formation of Phumdis.
- To construct watch towers and check posts to prevent wild life crime.
- To prevent fire incidents in the National Park and nearby vegetation.
- To develop the National Park as a well managed and well maintained tourist center to enhance the revenue collection for the State.
- Beautification of surrounding landscape of KLNP through road-side plantations.
- Maintenance of Forest Inspection Bungalow.

25. Wildlife Management:

A large number of species and sub-species of rare and endemic plants are found in Manipur. But considering the degree of destruction of forests as a result of pernicious shifting cultivation, it is imperative to take up measures for immediate conservation of the valuable flora and fauna of the State. Future management of forest areas having a rich genetic diversity shall have to be oriented in such a way that the physical character of the forests sheltering various life forms is not affected. The management system should include restorative measures, habitat improvement, law enforcement and training of manpower at various levels as well as public relations

26. Dev. of Yangoupokpi Lokchao Wildlife Sanctuary (YLWS)

Objectives of the Scheme:

- To protect and conserve the flora and fauna of Indo-Malayan region taking refuge in the Yangoupokpi Lokchao Wildlife Sanctuary lying at Myanmar border.
- To manage the sanctuary as per scientific management plan.
- To control human interference in the sanctuaries area by awareness campaign.
- To construct watch towers and check posts to prevent wild life crime.
- To prevent fire incidents in the sanctuary area and nearby vegetation.
- Plantation of Food & Shelter Trees.
- Creation of Water holes and salt lick.
- Purchase of Scientific equipments and operational outfit.
- Eradication of unwanted species for habitat improvement.
- To develop the sanctuary as a well managed and well maintained tourist centers to enhance the revenue collection for the State.
- Maintenance of Forest Inspection Bungalow.

27. Development and Management of Zoological Garden:

The Manipur Zoological Garden came into being on 2nd October 1976. The 8 (eight) hectare area, though originally meant for Iris preservation and experimental plantation of various economic and medicinal plants both indigenous and exotic, has now established itself into a medium sized Zoo. During the course of last one decade, the Zoological Garden has established a 2.13 hectares Sangai Breeding enclosure, aviaries for representative fauna of the region, breeding enclosure for Sambar, Cheetal, the Hog deer, Barking deer, Indian and Burmese pea fowl and water aviary of aquatic birds. A pair of Serow, Himalayan Black Bear, Leopard, Python etc. have also been added to the already rich multitude of wild birds and

animals of the Zoological Garden. With a view to establish a full fledged Zoological Garden, the neighboring reserved forests area and flat foot hills covering an area of 3 sq.km. are also being included to the Zoo for construction of the much needed enclosures. The Zoological Garden will serve as Nature Education Centre to the younger generation, research centre, recreational centre and revenue earning source.

28. Commercial Plantations (Rubber Plantations):

Objectives of the Scheme:

Commercial Rubber Plantations have been taken up in Jiribam area with the objective of producing natural rubber, enhancing revenue and uplifting rural economy of the local people by generating employment potentials and rehabilitating wastelands & Jhumlands.

UNDER CENTRALLY SPONSORED SCHEMES (CSS)

During 2010-11, the Department has implemented the following centrally sponsored schemes:

1.Intensification of Forest Management Schemes (IFMS)-

The Intensification of Forest Management Scheme (IFMS) is a revised version of 'Integrated Forest Protection Scheme (IFPS), formulated by the merger of two schemes viz. 'Forest Fire Control and Management' and 'Bridging of Infrastructure Gaps in Forestry Sector in the North Eastern Region and Sikkim'. Under this scheme, infrastructure development and forest fire and management are being taken up on 90:10 (Central : State) sharing basis.

2. National Afforestation Programme (NAP)-

The Department is implementing a 100% CSS of afforestation and allied activities under the aegis of Forest Development Agencies (FDAs) funded by National Afforestation & Eco-Development Board (NAEB), Ministry of Env't. & Forests, Government of India since 2002. The system was two-tier- FDAs at the district level and Joint Forest Management Committees(JFMCs) at the village level. In 2009, Government of India issued 'Revised Operational Guidelines (ROG) to be implemented from 1st April, 2010. Accordingly, implementation of the Programme is to be carried out through 3 tier system- SDFA (State Forest Development Agency) at the State level, FDAs at the Division/District level and JFMCs at the village level. The State Government has issued notification constituting SDFA (State Development Agency), FDAs (Forest Development Agencies) as per new ROG, 2009.

3. National Bamboo Mission (NBM)-

Considering the multiple applications of bamboo and its immense potential to improve livelihood of the rural population, Ministry of Agriculture & Co-operation, Horticulture Division, Government of India launched National Bamboo Mission (NBM) since 2006-07 (100% central assistance) with the following salient objectives:

- (1) *To promote growth of bamboo sector through area based regionally differentiated strategy;*
- (1) *Increase bamboo coverage with improved varieties to enhance yield;*
- (2) *Promote marketing of bamboo and bamboo based handicrafts;*
- (3) *Establish convergence and synergy among stake holders for development of bamboo;*
- (4) *Develop and disseminate bamboo technology through a blend of scientific knowledge and traditional wisdom.*

Implementation of the scheme is done through BDA (Bamboo Development Agency) and FDA (Forest Development Agency). Both the Agency are responsible for formulation of Annual Action Plan (AAP). While implementation of works in non-forest areas is carried out by the former, the latter confines to the forest areas through JFMCs.

4. Wildlife Conservation-

A number of wildlife schemes with 100% central's assistance for conservation and preservation of wildlife in the State, both in parks and sanctuaries, are taken up by Wildlife wing of the Forest Department. During this year, schemes being taken up are:

- 1 *Integrated Development of Wildlife habitats: Keibul Lamjao National Park*
- 2 *Integrated Development of Wildlife habitats: Yangoupokpi Lokchao Wildlife Sanctuary*
- 3 *Integrated Development of Wildlife habitats: Jiri Makru Wildlife Sanctuary*
- 4 *Integrated Development of Wildlife habitats: Siroy National Park*

5. Additional Central Assistance (ACA) -

This is also a 100% centrally sponsored scheme for “Accelerated Programme for Restoration and Regeneration of Forest Cover (APRRFC)” to promote-

- *Ecological restoration and regeneration of degraded forests and thereby improving the quality of forests.*
- *Conservation of the existing forests for enhancing ecological values.*

Slno	Name of Scheme & components of works	Physical target	Achievement (in progress)
7	<p>Manipur Zoological Garden –</p> <ul style="list-style-type: none"> • Introduction of Nongyin, the State bird (nos.) in the Zoo for captive breeding. • Face lifting and overall improvement of the Zoo premises, the enclosures and providing basic amenities . 		
8	<p>Implementation of 13th Finance Commission Award in the scientific management of forests:</p> <ul style="list-style-type: none"> • <i>Creation of modern nursery spreading throughout all territorial Forest Divisions</i> 34 nos. 34 nos. • <i>Plantation Working Circle- Advance work for regeneration-</i> <ul style="list-style-type: none"> (i) (AR)* 3420 ha 3420 ha (ii) ANR** 1790 ha 1790 ha • <i>Fuel wood & Fodder Working Circle-</i> <ul style="list-style-type: none"> (i) <i>Regeneration & Subsidiary silviculture operation</i> 4060 ha 4060 ha (ii) <i>Advance work (AR)</i> 985 ha 985 ha • <i>Protection Working Circle-</i> <ul style="list-style-type: none"> (i) <i>Demarcation of forest compartments</i> 8700 ha 8700 ha (ii) <i>Assistance to JFMCs</i> 160 nos. 160 nos. (iii) <i>Creation (ANR)</i> 505 ha 505 ha (iv) <i>Soil & Moisture conservation works</i> 1530 ha 1530 ha • <i>Selection –cum-Improvement Working Circle-</i> <ul style="list-style-type: none"> (i) <i>Harvesting of timber</i> 1540 cum 1540 cum (ii) <i>Preparation of treatment maps</i> 770 nos. 770 nos. (iii) <i>Demarcation of Annual coupes</i> 770 nos. 770 nos. (iv) <i>Creation of plantation commensurate with felling</i> 77 ha 77 ha • <i>Non-Wood Forest Produce Working Circle-</i> <ul style="list-style-type: none"> (i) <i>Advance work for NWFP*** plantations</i> 335 ha 335 ha • <i>Jhum Management Working Circle-</i> <ul style="list-style-type: none"> (i) <i>Advance work for Agro-horti-forestry plantation</i> 710 ha 710 ha <p><i>Civil Works-</i></p> <ul style="list-style-type: none"> • <i>Construction of a composite office building for Conservator of Forests & DFOs, Tissue laboratory at Mantripukhri Forest Complex</i> 1 each 1 each • <i>Establishment of Central timber depot & construction of Modern Saw-Mill at Sawombung.</i> 1 each 1 each • <i>Construction of Interpretation Centre & Tourism facilities at Orchid preservation Centre, Khonghampat</i> 1 each 1 each • <i>Providing of basic amenities to territorial offices</i> 		

*Artificial Regeneration, ** Aided Natural Regeneration, *** Non-wood forest produces

Centrally Sponsored Schemes:

<u>Sl.No</u>	<u>Name of Schemes</u>	<u>Expenditure during 2010-11 (till Feb. 2011)</u> <u>(Rs. in lakhs)</u>	<u>Physical Achievement</u>
1	Intensification of Forest management Scheme (IFMS), erstwhile Integrated Forest Protection Scheme (IFPS):		
	Forest Fire Control & Management	177.26	<ul style="list-style-type: none"> • Fireline maintenance – 1100 kms. • Assistance to 27 JFMCs • Construction of 4(four) Watch-Towers at i) Chakpikarong ii) Duncan Park iii) Sagang iv) Kanglatongbi
	Strengthening of Infrastructure for Forest		<ul style="list-style-type: none"> • Construction of 5(five) Beat Offices with solar lighting facilities at i) Yairipok ii) Litan iii) Sangaikot/Dumlian (iv) Molnoi and (v) Heirok • Construction of 7 Barrack type buildings with solar lighting facilities at i) Pallel ii) New Keithelmanbi iii) Komlathabi/Kappam iv) Serou Lamkhai (v) Ukhrul Range (vi) Kamjong and (vii) Chandel Range • Construction of 4(four) Range Offices with solar lighting facilities at Ukhrul Range, Kasom Khullen Range, Kangpokpi Range and Thanlon Range.
2	National Afforestation Programme (NAP):		
	Implemented by JFMCs constituted under Territorial Forest Divisions through FDAs	708.00	<ul style="list-style-type: none"> • Advance work over 3599 ha is carried out in anticipation of full release of fund • Creation over 2125 ha is carried out in anticipation of full release of fund.
3	National Bamboo Mission (NBM):		
	Implemented by JFMCs in Hill Divisions & BDA in areas adjoining valley	456.847	<ul style="list-style-type: none"> • Maintenance of plantation (2009-10) <ul style="list-style-type: none"> (i) in forest area- 210 ha (ii) In non-forest areas-1998 ha • Creation/Plantation during the year- <ul style="list-style-type: none"> (i) Forest areas -2950 (nursery raising) 2115 ha (Adv. Work) (ii) In non-forest areas-500 ha (Nur & Adv. Work) • Training of farmers and field functionaries (139 nos. & 20 nos. respectively)

4	Additional Central Assistance (ACA) :				
	Accelerated Programme for Restoration and Regeneration of Forest Cover (APRRFC)	273.00	<ul style="list-style-type: none"> Aided Natural Regeneration over 2775 ha. Establishment of 1 (one) production centre for QPM (Quality Planting Material) Soil Conservation measures 		
5	Wildlife Schemes:				
			Physical achievement	Unit	Qty
A	<i>Integrated Devt of Wildlife habitats: Keibul Lamjao National Park</i>	17.712	<p>Creation of on weather station with procurement of instruments - 1 digital barometer, 1 digital Rain guage, 1 Hygrometer, 1 Thermometer, 1 Wind meter, 1 water current recorder, 1 sunshine recorder & 1 soil PH recorder</p> <p>Conduct 2 days seminar cum workshop at Konuma</p> <p>Establishment & management of patrolling camps at Phoubakchao, Konuma, kumbi & Thanga</p> <p>Engagement of 20 protection mozdoors for 8 months</p> <p>Removal and unwanted invasive alien species at Sargam (30 ha), Chingmei(20 ha) Khordak(20 ha) & Thangbrel (30 ha)</p> <p>Providing salt licks inside the core area</p> <p>Publication of publicity and educational materials (Booklet & photos)</p> <p>Payment of wages for 10 casual animal watchers</p> <p>Wildlife week celebration</p> <p>Supply of Wildlife Trust of India (WTI) field kits, torch light, kerosine to staffs</p>	<p>Set</p> <p>No</p> <p>No</p> <p>No</p> <p>Ha</p> <p>Nos</p> <p>No.</p> <p>Mon</p> <p>No</p> <p>No</p>	<p>1</p> <p>1</p> <p>2</p> <p>20</p> <p>100</p> <p>20</p> <p>2100</p> <p>12</p> <p>1</p> <p>15</p>
B	<i>Integrated Devt. Wildlife habitats: Yangoupokpi Lokchao Wildlife Sanctuary</i>	12.296	<p>Conduct 2 days seminar cum workshop at Moreh</p> <p>Monitoring & Evaluation</p> <p>Engagement of 20 protection mazdoor for 8 months</p> <p>Cattle immunisation around the sanctuary at Moreh, Govajang, Makang, Bonjang, Kotha, Kotha Khunou, Lokchao & Khudengtabi</p> <p>Erection of Publicity/awareness signboards at Khudengtabi, Govajang, Lokchao, Kodong Lairembi & Makang village</p> <p>Food & Shelter tree plantation with local species local species Lokchao inside YLW sanctuary</p> <p>Distribution of fuel saving device (Pressure cooker)</p> <p>Payment of wges for 4 casual animal watchers from March, 2010 to Feb, 2011</p>	<p>No</p> <p>LS</p> <p>No</p> <p>No</p> <p>No</p> <p>Ha</p> <p>Nos</p> <p>No</p>	<p>1</p> <p></p> <p>20</p> <p>8</p> <p>5</p> <p>10</p> <p>50</p> <p>4</p>

C	<i>Integrated Devt. of Wildlife habitats: Jiri Makru Wildlife Sanctuary</i>	7.603	<p>Final Plantation of medicinal plant species over 25 ha (Advance Work carried out during 2009-10) i/c Soil & Moisture conservation work (Contour trenching at Ningjam</p> <p>Final Plantation of Fodder species (Advance work taken up during 2009-10) including Soil & Moisture conservation work (Contour trenching) at Ningjam Centre</p>	Ha	25
D	<i>Integrated Devt of Wildlife habitats: Siroy National Park</i>	7.45	<p>Final plantation of fodder species (Advance Work taken up during 2009-10) including Soil & Moisture conservation work (contour Trenching) at Khangkhui Khullen (25 ha) and Khangkhui Khunou (5 ha)</p> <p>Creation of firelines (New) at Khangkhui Khullen</p> <p>Erection of publicity/awareness signboards at Shiroi, Lunghar, Khangkhui Khullen & Khangkhui Khunou</p> <p>Publication of publicity and educational materials</p> <p>Wages for 5(five) Casual Watchers for 42 months (From April, 2009 to March, 2011) = 24x5=120 months</p> <p>Fireline cutting at Shiroi</p>	Ha	30
				Km	5
				No	4
				LS	2
				Mon	60
				Km	5.2

C H A P T E R - V I

Constraints in scientific management of forests

With the approval of all Working Plans for all Forest Divisions in the State during the year, prepared as per directions of Hon'ble Supreme Court, and subsequent approval of Action Plan based on these Working Plans for working of forests of the State on scientific lines, implementation of the Action Plan is being taken up under 13th Finance Commission Award, in continuation of the Action Plan already taken up for Eastern and Tengnoupal Forest Divisions under 12th Finance Commission grants. Scientific management of forests as per the approved Action Plan is not free from constraints. Some of which are mentioned below:

- ***Practices of Shifting cultivation*** : Among the various injuries to the forest crop of Manipur, the traditional practices of jhuming cultivation in the hills causes maximum loss. Though no survey to ascertain the exact population involved in shifting cultivation and areas subjected to jhuming has been carried out, it is estimated that about 70,000 families are traditional jhumias constituting about 80% of the tribal population who earn their livelihood by practicing jhuming. Forest cover affected due to shifting cultivation is 855 Sqkm or, 85,500 ha (FSI-2003).
- ***Forest fires***: Forest fires are common and frequent in the forest areas all over the State. The incidence of forest fire is more in the forest areas adjoining the valley. Villagers set fire to forests to get flush of new grass for their cattle and for collection of fire wood. Regeneration (natural as well as artificial) is completely wiped out and wildlife including rare plants is severely damaged. The hill forests get burnt every year due to wild fire spreading from the burning of jhum. Most of the fires occur in unclassed forests wherein the Department have very little or no control and maintain the records. The extend of area affected by forest fire is estimated to be about 2000 sqkm annually. *Details of forest fire incidents in various districts of Manipur during fire season (from November, 2009 to May, 2010) is appended at annexure-4.*
- ***Encroachment***: There has been a steady encroachment inside forest land before and after 1980 as there are thickly populated areas adjoining every Reserved and protected forests. Villagers encroached upon forest lands not only out of necessity but in anticipation of getting better land inside RF/PF, expecting to get them regularized in their favour later on. Extent of encroachment in forests (as on 31.3.2008) is 1844.633 ha. (*Details may be seen at annexure-5*)

- **Grazing :** It is estimated that 60% of the cattle/livestock (*population : 6,08,385 Source-Statistical Abstract Manipur-2007*) in the State graze in the forests causing destruction to regeneration of forests both natural and plantation.
- **Smuggling of forest produces:** Manipur is surrounded by Myanmar, Nagaland, Mizoram and Assam. As the borders are quite porous, there are chances of smuggling of forest produces to and from the State. Checking of this illegal activities could not be strictly enforced due to lack of man-power and fire-power.
- **Lack of man-power:**
With the ever increasing activities in the conservation efforts of environment and forests, strengthening of man-power in the Department is necessary. However, no fresh recruitments have been made in the Department for the last many years now. All frontline staff manning Range Offices, Beat Offices and protecting the forests, negotiating with hilly terrains, are over 50 years old. In order to implement management of forests on scientific lines, and to strictly enforce all Acts and Rules, strengthening of Man-power in the Department is highly essential and needs to be taken up on a war-footing basis. Raising of a Forest Protection Force in the State is being contemplated. (*Details may be seen at Annexure-2*)

CHAPTER - VII

Revenue & Expenditures

Revenue:

Forest Department is no longer considered a revenue earning organization of the Government. On the contrary, more emphasis has been laid on conservation of the environment and the natural resources. However, the Department could collect a sum of **Rs. 199.39 lakhs** as revenue from various forest produces during the year 2010-11. With the harvesting of timber (as per Approved Action Plan based on Approved Working Plans of all Forest Divisions) of about 1540 cum. in progress, it is anticipated that more revenue would flow in, once sale of these harvested timber are made.

The following table shows outturn and revenue of forest produces :

Slno	Name of Forest Produce	Revenue earned (Rs.)	Remarks
1	Major Forest Produce	143,87,192.00	<i>Details may be seen at Annexure- 8</i>
2	Minor Forest Produce	46,27,524.00	
3	Miscellaneous	8,20,856.00	
Total:		1,98,35,572.00	

A comparative statement showing collection of Revenue during the last three years:

SL. NO.	YEAR	REVENUE FIGURE (AMOUNT IN RUPEES)
1	2007-08	132,95,217.00
2	2008-09	102,22,806.00
3	2009-10	202,65,232.00
4	2010-11	199,39,772.00

Expenditure :-

In a nutshell, the expenditure of the Forest Department, Manipur (both Plan & Non-Plan) may be tabulated as follows:

Sl. No.	Particulars	Expenditure (Rs in lakh)
1	Plan (a) Forestry & Wildlife	2945.31
	(b) Soil Conservation	125.00
	(c) Rubber Plantation	9.98
	State Plan (total):	3080.29
.	Centrally Sponsored Schemes	2249.861
	Grand Total (Plan) :	5330.151
2	Non-Plan:	2523.86

CHAPTER - VIII

PLAN OUTLAYS (2010-11)

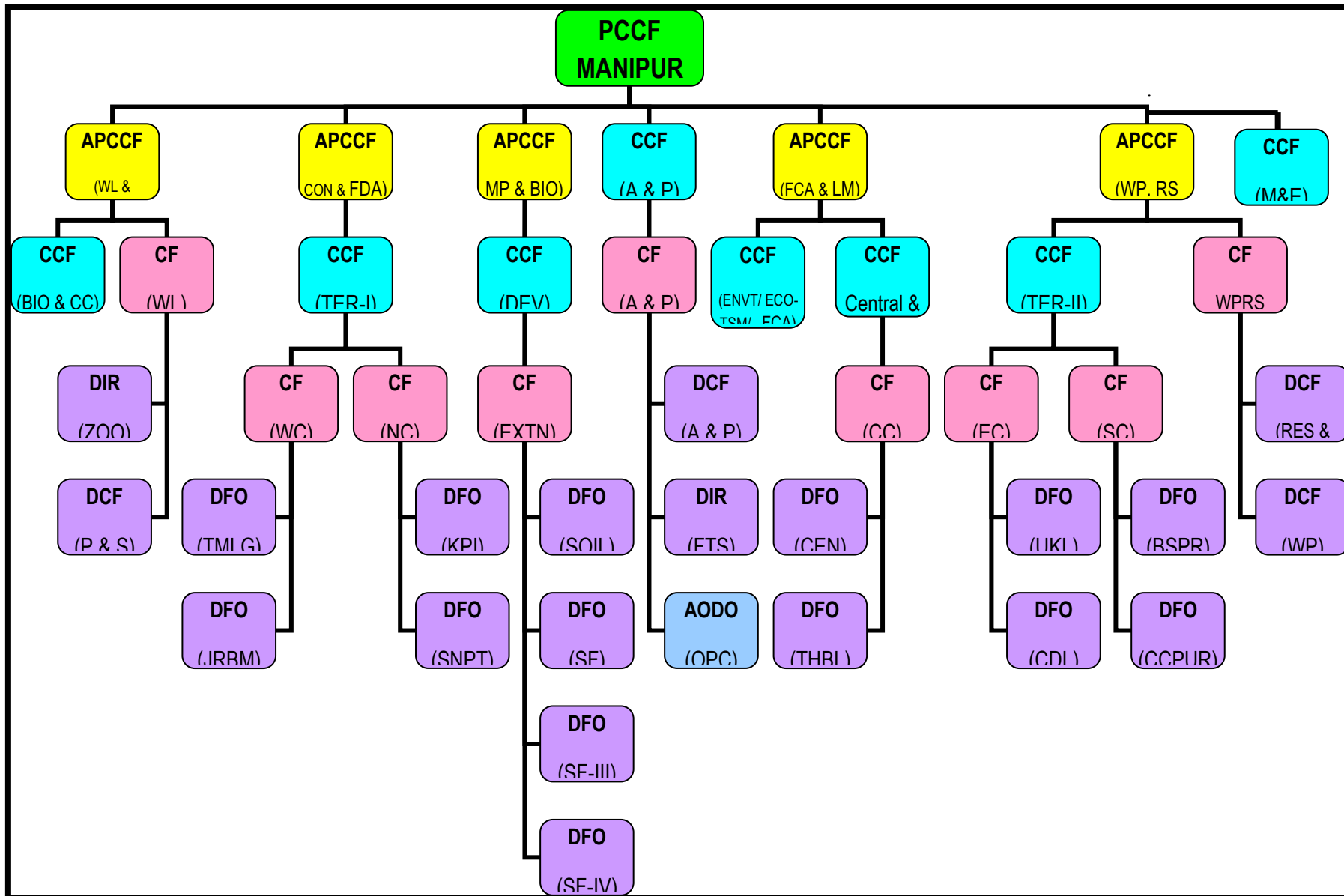
State Plan:

Major Heads/Minor heads of Development	Approved outlay for 2010-11	Plan expenditure, 2010-11)
<i>Rupees in lakh</i>		
AGRICULTURE & ALLIED ACTIVITIES :-		
MH 2402 Soil and Water Conservation (Plan)		
Afforestation (SH-03)	105.00	105.00
Rehab. of Jhumias (SH-27)	20.00	20.00
Sub-Total (2402) :	125.00	125.00
MH 2406 Forestry & Wildlife (Plan)		
<u>Sub Head 001 Direction & Administration :</u>		
Detailed 01 Direction	73.00	62.64
Detailed 01 Information Technology (IT)	27.00	27.01
Sub-head 29 Research	21.16	21.18
Sub-Head 34 Training	25.00	24.99
Sub-Head 36 Working Plan	31.00	30.98
Sub-Head 32 Statistics	6.00	0.99
Sub-Head 07 Forest Communication	6.00	5.91
Sub-Head 18 Forest Buildings	62.00	76.99
Sub-Head 08 Joint Forest Management	5.54	5.56
Sub-Head 20 Forest Protection & Fire Control	18.00	18.12
Sub-Head 21 Forest Publicity	7.29	7.28
Sub-Head 01 Social Forestry plantations	140.00	140.00
Sub-Head 09 Urban & Recreational Forestry	200.00	199.94
Sub-Head 11 Restocking of RF(Economic Plantation)	205.00	205.03
Sub-Head 23 Minor Forest Produce	15.00	14.48
New Scheme - Development and Extension of Orchids	20.00	19.99
New Scheme - Implementation of Working Plans and Departmental Extraction	10.00	10.00
Sub-Head 45 State share of CSS	50.00	21.09
New Scheme- 13th Finance Commission Grant	1879.00	1879.00
New Scheme- Compensatory Afforestation and Environmental restoration	0.01	0.00
Sub-Head 05 Captive Breeding	9.00	8.99
Sub-head 10 Control of Poaching	9.00	9.00
Sub-head 22 Development of Keibul Lamjao National Park	33.00	33.00
Sub-head 35 Wildlife Management	8.00	8.01
Sub-Head 37 Development of Yangoupokpi Lok. WL sanctuary	20.00	19.99
Sub-head 38 Zoological Garden	39.00	39.00
MH 2407 Plantation		
Sub-Head 25 Rubber Plantation	10.00	9.98
Manipur Biodiversity Board	40.00	56.14
Sub-Total (2406 & 2407) :	2969.00	2955.29
Grand Total	3094.00	3080.29

Centrally Sponsored Schemes:

Name of CSS	Approved outlay for 2010-11 (Rs. in lakh)	Expenditure during 2011- 2011 (Rs. in lakh)
I. Intensification of Forest Management (90:10 sharing basis)	210.90	186.90
II. National Afforestation Programme (NAP) (100% CSS)	1037.90	1037.90
III. National Bamboo Mission (100 % CSS)	707.00	707.00
IV. Additional Central Assistance (100% CSS)	273.00	273.00
V. Wildlife Schemes (100 % CSS)*		
(a) Integrated Development of Wildlife habitats: Keibul Lamjao National Park	41.00	17.712
(b) Integrated Development of Wildlife habitats: Yangoupokpi Lokchao Wildlife Sanctuary	38.428	12.296
(c) Integrated Development of Wildlife habitats: Jiri Makru Wildlife Sanctuary	15.58	7.603
(d) Integrated Development of Wildlife habitats: Siroy National Park	15.53	7.45
Total:	2339.338	2249.861

ORGANIZATIONAL CHART OF FOREST DEPARTMENT: MANIPUR



Statement showing sanctioned strength of the Forest Department, Manipur vis-à-vis staff in position (as on 28.02.2011)

S/no	Name of Post(s)	Sanctioned strength	Staff in-position	Vacancies	Remarks
A	Administrative & Field				
1	Principal Chief Conservator of Forests	1	1	0	
2	Addl Principal Chief Conservator of Forests	2	3*	0	*1 ex-cadre posts
3	Chief Conservator of Forests	6	8#	0	#2ex-cadre posts
4	Conservator of Forests	9	8	1	
5	Deputy Conservator of Forests (IFS)	16	8	8	
6	Deputy Conservator of Forests (MFS)	2	0	2	
7	Asst. Conservator of Forests	25	13	12	
8	Range Forest Officer	73	63	10	
9	Deputy Ranger	91	77	14	
10	Forester	119	93	26	
11	Head Forest Guard	75	55	20	
12	Forest Guard	503	389	114	
13	Boatman	6	4	2	
B.	Specialized Posts				
1	Wood Preservation & Seasoning Officer	1	1	0	
2	Vety. Assistant Surgeon	1	0	1	
3	Asst. Settlement Officer	1	0	1	
4	Asst. Orchid Development Officer	1	0	1	
5	Rubber Supervisor	1	0	1	
6	Veterinary Field Assistant	1	0	1	
7	Cinema Operator	1	1	0	
8	Asst. Cinema Operator	1	0	1	
C	Ministerial				
1	Accounts Officer	1	1	0	
2	Superintendent	1	1	0	
3	Asst. Private Secretary	3	3	0	
4	Head Clerk/Senior Accountant	15	8	7	
5	Junior Accountant	12	12	0	
6	Upper Division Clerk	28	27	1	
7	Lower Division Clerk	80	70	10	
8	Stenographer Grade-I	4	4	0	
9	Peon	52	29	23	
10	Khallas	8	6	2	
11	Driver	30	17	13	
12	Chowkidar	9	6	3	
13	Mali	15	12	3	
14	Sweeper	8	7	1	
15	Draftsman Gd.I	1	0	1	
16	Draftsman Gd.II	1	1	0	
17	Tracer	2	1	1	
18	Store Keeper	1	0	1	
19	Daftry	1	0	1	
TOTAL:		1207	929	278	

Annexure-3***List of Forest Establishments/ territorial Offices up to Beat Office***

Sl No	Name of Forest Divn.	Name of Range Office	Name of Beat Office		
1	DFO:Central Forest Division	a) Sadar West	i) Iroisemba		
			ii) Thongak Lairembi		
			iii) Tarung		
			iv) Lamdeng		
			v) Pheidंगा		
			vi)Yengoubung		
		b) Sadar East	i) Koirengei		
			ii) Sekmai		
			iii) Heingang		
			iv) Mayang Imphal		
		c) Sawombung	i) Gwaltabi		
			ii) Napetpali		
			iii) Moirang Kampu		
		d)Nongmaiching	i) Irilbung		
			ii) Pangei		
			iii) Nongpok Sanjenbam		
iv) Sagolmang					
2	DFO: Bishnupur Forest Division	a) Moirang	i) Komkeirap		
			ii) Sendra		
			iii) Ithai		
			iv) Phobakchao		
		b) Bishnupur	i) Nambol		
		3	DFO:Thoubal Forest Division	a) Thoubal	i) Shikhong
					ii) Yairipok
					iii) Mayai Keithel
iv) Heirok					
b) Kakching	i) Waikhong				
	ii) Pallel				
	iii) Wangoo				
	iv) Panjao				
4	DFO:Western Forest Division (Tamenglong)	a) Tamei	Nil		
		b) Tamenglong	Nil		
		c) Noney	i) Laimaton		
			ii) Tupul		
		d) Nungba	i) Irang		
5	DFO: Southern Forest Division (Churachandpur)	a) Sagang	i) Tuiningkhal		
			ii) Nganukon		
			iii) haotak		
		b) Singngat	i) Muallum		
		c) Parbung	i) Tipaimukh		
		d) Thanlon	Nil		
		e) Churachandpur	i) Saikot		
			ii) Buangmual		
			iii) Lanva		
		f) Henglep	i) Aina		
			ii) S.Kotlen		

6	DFO: Jiribam Forest Division	a) Jiribam	i) Gularthol ii) Kunjabon		
		b) Jirimukh	i) Makha Basti		
		c) Choudhurikhal	i) Sibapurikhal		
7	DFO: Eastern Forest Division Ukhrul	a) Ukhrul	i) Litan ii) Hundung iii) Gamnom iv) Nungbi v) Shangshak		
		b) Kamjong	Nil		
		c) Jessami	i) Kharasom		
		d) Kasom Khullen	Nil		
		8	DFO:Tengnoupal Forest Division, Chandel	a) Chakpikarong	i) Teiyang
				b) Chandel	i) Komlathabi
c) Moreh	Nil				
d) Tengnoupal	i) Molnoi				
e) Yangenching (Reserve)	Nil				
9	DFO: Northern Forest Division, Kangpokpi	a) Kangpokpi	i) Koubru		
		b) Motbung	i) New Keithelmanbi ii) Kotlen iii) Kanglatombi iv) Leimakhong		
		c) Saikul	Nil		
		d) T.Waichong	Nil		
		10	DFO: Senapati Forest Division	a) Karong	i) Tadubi ii) Mao iii) Maram
b) Liyai Khunou	Nil				

**INCIDENTS OF FOREST FIRE IN VARIOUS DISTRICTS OF MANIPUR DURING FIRE SEASON
(FROM NOVEMBER, 2009 TO MAY, 2010)**

Month	No. of incidents of Forest Fire								Total
	Central	Thoubal	Bishnupur	Chandel	Ukhrul	Tamenglong	Senapati*	Churachandpur	
Nov, 2009									
Dec, 2009									
Jan, 2010	-	-	-			28.1.2010-2 <u>31.1.2010-2</u> 4	<u>30.1.2010-1</u> 1	<u>31.1.2010-3</u> 3	8
Feb, 2010	-	-	-	20.2.2010-2 22.2.2010-1 <u>27.2.2010-3</u> 6	1.2.2010-1 4.2.2010-1 13.2.2010-1 15.2.2010-4 20.2.2010-1 <u>24.2.2010-2</u> 10	1.2.2010-2 2.2.2010-2 4.2.2010-4 10.2.2010-2 13.2.2010-5 15.2.2010-13 17.2.2010-1 26.2.2010-8 <u>27.2.2010-3</u> 40	2.2.2010-4 6.2.2010-4 13.2.2010-4 15.2.2010-9 20.2.2010-1 <u>27.2.2010-1</u> 23	6.2.2010-1 20.2.2010-3 25.2.2010-1 <u>27.2.2010-2</u> 7	86
Mar, 2010	-	-	-	2.3.2010-2 3.3.2010-10 4.3.2.10-4 5.3.2010-1 <u>9.3.2010-1</u> 18	3.3.2010-11 5.3.2010-1 7.3.2010-2 <u>9.3.2010-5</u> 19	1.3.2010-25 2.3.2010-6 3.3.2010-52 <u>4.3.2010-5</u> 88	1.3.2010-2 2.3.2010-1 3.3.2010-30 <u>5.3.2010-2</u> 35	2.3.2010-2 3.3.2010-15 4.3.2010-3 5.3.2010-7 6.3.2010-2 <u>9.3.2010-19</u> 48	208
April, 2010	-	-	-						
May, 2010	-	-	-						
Total:-				24	29	132	59	58	302

**including Langol RF, which falls within Senapati District but under Central Forest Division*

Statement showing Encroachment in forests areas as on 31.3. 2008

S/no	Name of Division	Area encroached (ha)
1	Central Forest Division, Imphal	168.963
2	Thoubal Forest Division	130.73
3	Bishnupur Forest Division	Nil
4	Southern Forest Division, Churachandpur	49.19
5	Tengnoupal Forest Division, Chandel	82.00
6	Eastern Forest Divisionh, Ukhul	Nil
7	Northern Forest Division, Kangpokpi	292.75
8	Senapati Forest Division	Nil
9	Western Forest Division, Tamenglong	816.00
10	Jiribam Forest Division	Nil
11	Yangoupokpi Lokchao Wildlife Sanctuary	305.00
	Total:	1844.633

LIST OF PLANTATION CENTRES UNDER SOIL CONSERVATION 2010-11

	Particulars of work	Area	Centre	Block/Compt.No
Afforestation	1. Final Plantation 480 Ha.	30 Ha. 25 Ha. 25 Ha.	<u>Khuga Soil Cons. Range</u> 1.S.Goltui 2.Tuisomjang 3.Panglian Lok	Simbuk/10 Khoupum CCpur/66 Simbuk/10
		30 Ha. 25 Ha. 25 Ha.	<u>Saikul Soil Cons.Range</u> 1.Sinam Uthamballok 2.Leikot Khalhoubi 3.Leikot Thayong	Khamelok/21 Khamelok/21 Khamelok/21
		30 Ha. 25 Ha. 25 Ha.	<u>Noney Soil Cons.Range</u> 1.Savi Badung (Khoken) 2.Toukomjang (Tupul) 3.Karouthang Lungbut (Tupul)	Kangchup/14 Thangal/27 Thangal/27
		30 Ha. 25 Ha. 25 Ha.	<u>Litan Soil Cons.Range</u> 1.Pakhulok 2.Pakhuching 3.Lamlai Lokchao	Khamelok/1 Khamelok/1 Khamelok/1
		30 Ha. 30 Ha. 20 Ha.	<u>Nongmaiching Soil Cons.Range</u> 1.Hejjanglok 2.Maringthen 3.Sajouba	Iribung/24 Iribung/23 Tadubi/17
		30 Ha. 25 Ha. 25 Ha.	<u>Gwarok Soil Cons.Range</u> 1.Heibilok (Wabaching Village) 2.Sahilok (Heinoukhong) 3.Waikhupokpi (Heinoukhong)	Tonglong/10 Tonglong/10 Tonglong/10
	2) Advance work i/c nursery over 480 Ha. for 2011-12 plantation	25 Ha. 25 Ha. 30 Ha.	<u>Khuga Soil Cons.Range</u> 1.Teiseng (M.Songgel) 2.T.Molkon 3.Tuisomjang (Guite Lok)	Khoupum CCpur/66 Khoupum CCpur/65 Khoupum CCpur/66
		25 Ha. 25 Ha. 30 Ha.	<u>Saikul Soil Cons.Range</u> 1.Sinamkom(Irilok)) 2.Phaijol Village 3.Leikot(Pakhulok)	Khamelok/1 Khamelok/21 Khamelok/21
		25 Ha. 25 Ha. 30 Ha.	<u>Noney Soil Cons.Range</u> 1.Chingkhongbadung (Khoken) 2.Tuithanglok (Tupul) 3.Ruponbanglong	Kangchup/14 Thangal/27 Thangal/27
		25 Ha. 25 Ha. 30 Ha.	<u>Litan Soil Cons.Range</u> 1.Nongmakhong Lok 2.Lamlai Ching 3.Thamthei	Yaingangpokpi/6 Yaingangpokpi/6 Yaingangpokpi/6
		25 Ha. 25 Ha. 30 Ha.	<u>Nongmaiching Soil Cons.Range</u> 1.Kharam Chingyang 2.Santhei Kha 3.Santhei Chingyang	Iribung/23 Iribung/24 Iribung/24
		25 Ha. 25 Ha. 30 Ha.	<u>Gwarok Soil Cons.Range</u> 1.Lairen Lok(Wabaching) 2.Kangol Houbi 3.Khumanching(Thamlai)	Tonghlang/14 Tonghlang/14 Tonghlang/14

REHB. OF JHUMIAS;	1.Final plantation over 48 Ha	8 Ha.	<u>Khuga Soil Cons.Range</u> 1.Panglian	Simbuk/10
		8 Ha.	<u>Saikul Soil Cons.Range</u> 1.Leikot Sangadon	Khamelok/21
		8 Ha.	<u>Noney Soil Cons.Range</u> 1.Lungbut (Tupul)	Thangal/27
		8 Ha.	<u>Litan Soil Cons.Range</u> 1.Lamlai Ching(Sailen Village)	Khamelok/1
		8 Ha.	<u>Nongmaiching Soil Cons.Range</u> 1.Maringthen	Irlbung/23
		8 Ha.	<u>Gwarok Soil Cons.Range</u> 1.Heibilok	Tonglong/10
	2.Advance work i/c nursery over 48 Ha. for 2011-12 plantation	8 Ha.	<u>Khuga Soil Cons.Range</u> 1.Teiseng (M.Songgel)	Khoupum CCpur/66
		8 Ha.	<u>Saikul Soil Cons.Range</u> 1.Leikot (Pakhulok)	Khamelok/21
		8 Ha.	<u>Noney Soil Cons.Range</u> 1.Tuithanglok (Tupul)	Thangal/27
		8 Ha.	<u>Litan Soil Cons.Range</u> 1.Lamlaiching	Khamelok/1
		8 Ha.	<u>Nongmaiching Soil Cons.Range</u> 1.Kharam Chingyang	Irlbung/23
		8 Ha.	<u>Gwarok Soil Cons.Range</u> 1.Lairenlok	Tonghlang/14

Total : Plantation under Soil Conservation –

	<u>Afforestation</u>	<u>Rehab. Of Jhumias</u>
(i) Advance work –	480 ha	48 ha
(ii) Creation/ Plantation-	480 ha	48 ha

LIST OF PLANTATION CENTRES UNDER SOCIAL FORESTRY PROGRAMMES DURING 2010-11

DFO: Social Forestry Divn

Particulars of work	Area	Location		Area	Location
1. Creation	25 ha.	Taorem	Advance Work :-	25 ha	Taorem-I
	20 ha	Karong		20 ha	Karong-I
	25 ha.	Islamabad		20 ha	Khuningthek
	20 ha	Alipur		25 ha	R. Ngaronlong
	25 ha	Chingphei		20 ha	Ramrei
	20 ha	Khai Varen Hungphung		20 ha	Tasher Form
	25 ha	Rajunaun		20 ha	Alulao
	20 ha	Longmai Chongbranglong		25 ha	S.Lhangnom
	25 ha	Lungjachung Songphel		20 ha	T. Semol
	20 ha	Papilong		20 ha	Noney
Sub-Total :-	225 ha			20 ha	Lukhambi Part-II
				25 ha	Ejeithel
				25 ha	Nungkhal East
				20 ha	Nungkhal West
				20 ha	Mullargaon
				325 ha	

DFO: Social Forestry Divn. III

Social Forestry Plantation	S/F Range	Creation	Area	Advance work	Area	Cpt. No.	Block
		Centre/Village	Ha.	Centre/Village	Ha.		
1. Bishnupur S/F Range	S/F	a)Sadu Chiru	30	a) Maukot	20	32	Simbuk Teisheng
		b) Loibol	30	b)K. Changaram	20	32	
		c)S.Lonphai	25				
Sub-total:			85		40		
2. Southern S/F Range	S/F	a)Tuiningkhal	30	a)T.N. Vaison	20	65	Khoupum Dampi
		b)T.N. Vaison	30	b) Dumlian	20	35	
		c) Lamjang	25				
Sub-Total			85		40		
Grand total :-			170		80		

DFO: Social Forestry Divn. IV:

Social Forestry Plantation	Final Plantation.	(i) Thoubal SF Range	
			(1) Kamu Koireng (2) Kainaching (3) Gotangkot (4) Pheitaiching
a) Final Plantation.		(ii) Chandel SF Range	
		(1) Ukon Thingkangphai (2) Purum (3) Phiranching (4) Moldenphai	20 ha. 20 ha. 20 ha. 20 ha.
	Total:	160	
b) Advance Work		(i) Thoubal SF Range	
		(1) Uranching (2) Heirangoi lok	20 ha. 20 ha.
		(ii) Chandel SF Range	
		(1) Aihang (2)V. Mongjang	20 ha. 20 ha.
	Total:	80	

Total : Social Forestry Plantation- (i) Advance work – 480 ha (ii) Creation/ Plantation-555 ha

LIST OF PLANTATION CENTRES UNDER ECONOMIC PLANTATION (Restocking of Reserved Forests) 2010-11:

Name of Divisions	Particulars						
DFO: Central Forest Division	<p>i) Final plantation of Economic plantation over 100 ha. – 25 ha. at Uchon Sanmarusabi under Nongmaiching RF, 10 ha. each at Tinsid Chingmang, Sangsabi Chingjin & Napet Kamba under Sawombung Range, 20 ha. at Kameng Chinga Lambi under Sadar East Range & 25 ha. at Cheiraoching under Sadar West Range.</p> <p>ii) Advance work of Economic plantation over 100 ha. - 25 ha. at Langol RF, 25 ha. Heingang RF, 30 ha. Nongmaiching RF & 20 ha. Chingkheiching RF</p>						
DFO: Eastern Forest Division, Ukhrul	<p>a) Final plantation over 20 ha. at Gwaltabi-Mahadev Plot V (A) Centre (Compt. No.9 of Khamellok Block of Khamellok-Gwaltabi RF)</p> <p>(b) over 20 ha. at Gwaltabi-Mahadev Plot V (B) Centre (Compt. No.9 of Khamellok Block of Khamellok-Gwaltabi RF)</p> <p>(c) over 20 ha. at Gwaltabi-Mahadev Plot VI (A) Centre (Compt. No.9 of Khamellok Block of Khamellok-Gwaltabi RF)</p> <p>(d) over 20 ha. at Gwaltabi-Mahadev Plot VI (B) Centre (Compt. No.9 of Khamellok Block of Khamellok-Gwaltabi RF)</p> <p>Advance work of economic plantation over 50 ha at Gwaltabi-Mahadev Plot No.VII & VIII (comp no.9 of Khamenlok Block of Khamenlok-Gwaltabi RF)</p>						
DFO: Southern Forest Division, Churachandpur	<p>A) Creation:</p> <p>i) Saikul VII 25 Ha. compt no. 4 Dampi RF</p> <p>ii) Saikul (Lokchao)25 Ha.C/No. 4 Dampi RF</p> <p>iii) Humaigei III 25 Ha. –do- 11 –do-</p> <p>iv) –do-(Mayaiching) 25 Ha. C/No. 13 –do-</p> <p>v) Tuidum II 25 Ha.–do- 10 Cheklaphai RF</p> <p>vi) Tuidum II (Chingtek) 25 Ha. –do- 10 –do-</p> <p>B) Advance Work i/c Nursery :</p> <p>i) Singtom 30 Ha. C/No. 17 Dampi RF</p> <p>ii) Tuidum III 30 Ha. C/No. 12 Cheklaphai RF</p> <p>iii)Humaigei IV 30 Ha.C/No. 11 Dampi RF</p>						
DFO: Western Forest Division, Tamenglong	<p>(a) Final operation over 25 ha X 4=100 Ha at Laimaton Plot 12, Latgaiting , Gangilui & Mukhtokhal.</p> <p>(b) Advance work Over – 150 Ha at Irangmukh Plot 2 (35ha), Plot 3 (40ha), Plot 4 (35ha) & Plot 5 (40ha).</p>						
DFO: Northern Forest Division, Kangpokpi	<p>(a) Final Plantation over 45 ha X2= 90 ha at Chandraman & Mangjol</p> <p>(b) Advance Work 90 ha. Kolpechang-I & II (15 ha each); Baiji & Tuikun (15ha each) and Khumanthouching I & II (15 ha each).</p>						
DFO: Senapati Forest Division	<p>i). Advance work i/c nursery creation over 50 Ha at Maram Khullen centre of Tadubi - Maram Reserve Forests.</p>						
DFO: Tengnoupal Forest Division, Chandel	Range	Creation	Area (Ha)	Adv. Work	Area (Ha)	Cpt No	Block
		Centre/Village		Centre/Village			
	Chakpikarong	i) Utangpokpi-V	25	i) Tarung ching	25	1	YCG RF
		ii) Walkhurin-III	25	ii) Khongnangpheishabi	25	1	-do-
		iii) Y. Kutha-III	25	iii) Toupokpi	25	3	-do-
		iv) P. Khudam-III	25	iv) Pleasure Hill	25	12	KBG RF
		v) Chakpi Molbem-III	25	v) Changpimol	25	11	-do-
		vi) Sarang Tampak-II	25	vi) Ravalon	25	8	-do-
				vii) Kangbung	25	13	-do-
			viii) Chakpikarong Khupi	25	13	-do-	
Total:-				200			

**Statement of Revenue & Outturn figures for the year, 2010-11
(as on 31.3. 2011)**

Sl. No	Name of Forest Produce	Unit	Quantity	Value (Rs.)
Major Forest Produce				
1	Timber	Cum	51502.322	12491811.00
2	Firewood	Tonne	18961.778	1895381.00
Sub- Total:-				14387192.00
Minor forest Produce				
3	Cane	Rm	30675	125860.00
4	Bamboo	No	1508010	578495.00
5	Sand	Cum	95355.49	1089737.00
6	Stone	Cum	134563.3	2204022.00
7	Earth	Cum	2029	43850.00
8	Charcoal	Qtl	653	34570.00
9	Smilex	Kg	4500	3456.00
10	Long peeper	Kg		4000.00
11	Stone Mahal			62487.00
12	Smilex mahal			12700.00
13	Broom Mahal			25700
14	Cane Mahal			22075.00
15	Sand Mahal			4200.00
16	Tera Mahal			4230.00
17	Tera fruits			8400.00
18	Rubber	Kg	998	195634.00
19	Agarwood			7000.00
20	Thatching grass	Bdl	1000	300.00
21	Broom	Kg	684912	200808.00
Sub-Total:-				4627524.00
Miscellaneous				
16	Wildlife Compounding & Offence Fee			80000.00
17	Moreh Rest House Charge			91350.00
18	Security Deposit forfeitted			5675.00
19	Entry Fee of Zoological Garden			327949.00
20	Others			315882.00
Sub-Total:-				820856.00
Grand-Total:-				1,98,35,572.00

(Rupees One crore ninety eight lakh thirty five thousand five hundred seventy two) only